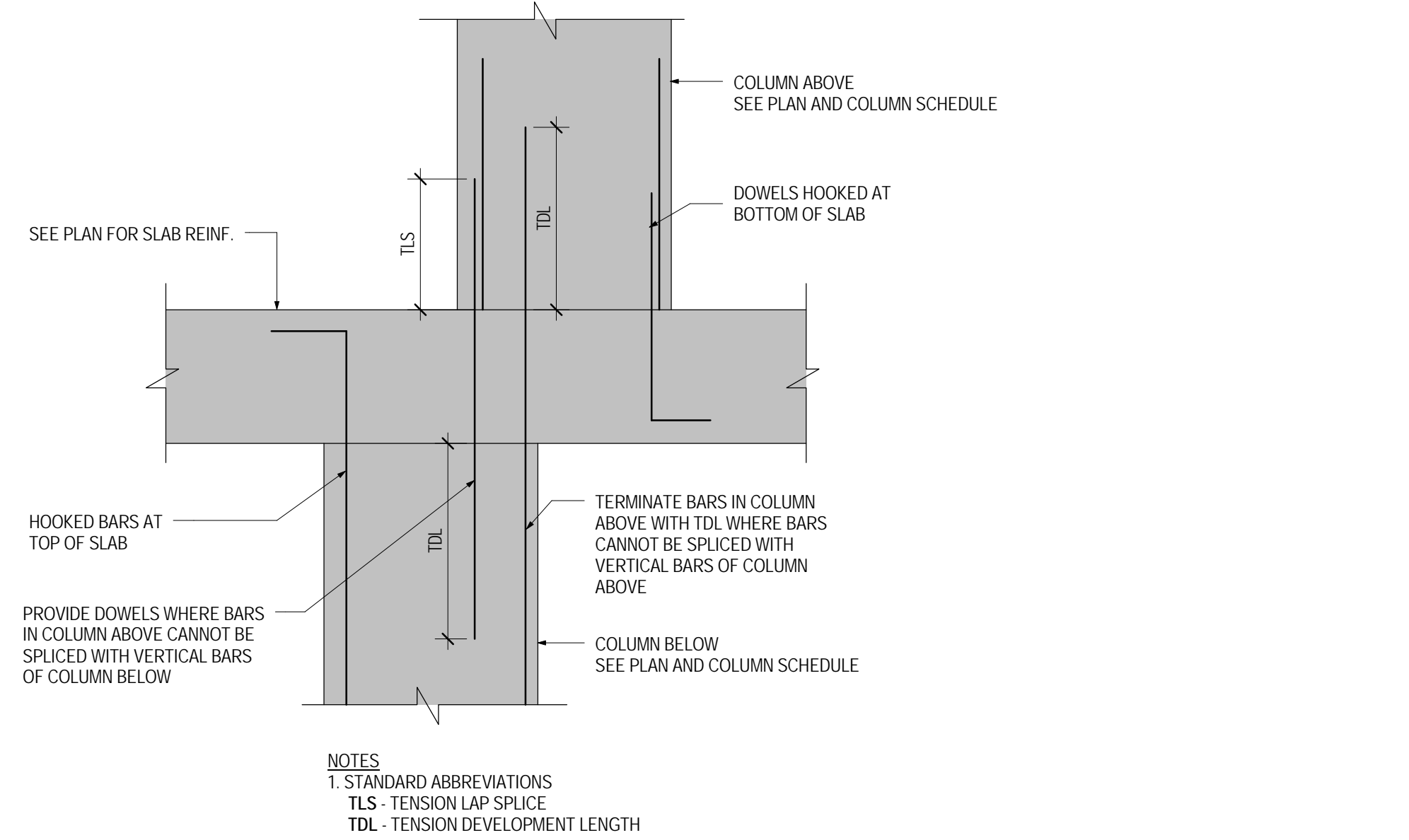


CONCRETE COLUMN SCHEDULE (LEVEL 2 AND BELOW)																																												
COLUMN NUMBER																																												COLUMN NUMBER
LEVEL 2																																												LEVEL 2
6000																																												6000
SIDE VIEW REIN. RES. STRENGTH																																												SIDE VIEW REIN. RES. STRENGTH
LEVEL 1 MEZZ.																																												LEVEL 1 MEZZ.
6020																																												6020
SIDE VIEW REIN. RES. STRENGTH																																												SIDE VIEW REIN. RES. STRENGTH
LEVEL 1																																												LEVEL 1
7100																																												7100
SIDE VIEW REIN. RES. STRENGTH																																												SIDE VIEW REIN. RES. STRENGTH
LEVEL 1 MEZZ.																																												LEVEL 1 MEZZ.
7500																																												7500
SIDE VIEW REIN. RES. STRENGTH																																												SIDE VIEW REIN. RES. STRENGTH
LEVEL 2																																												LEVEL 2
7220																																												7220
SIDE VIEW REIN. RES. STRENGTH																																												SIDE VIEW REIN. RES. STRENGTH
LEVEL F2																																												LEVEL F2
6600																																												6600
SIDE VIEW REIN. RES. STRENGTH																																												SIDE VIEW REIN. RES. STRENGTH
LEVEL F3																																												LEVEL F3
6600																																												6600
SIDE VIEW REIN. RES. STRENGTH																																												SIDE VIEW REIN. RES. STRENGTH
LEVEL F4																																												LEVEL F4
6800																																												6800
COLUMN LOADS																																												COLUMN LOADS
COLUMN NUMBER																																												COLUMN NUMBER

[illegible]

CONCRETE COLUMN SCHEDULE NOTES

1. COLUMNS/LOADS PROVIDED ARE U.S. FACTORED VALUES AND INCLUDE LIVE/LOAD REDUCTION FACTOR FOR LOCATION OF COLUMNS WITH RESPECT TO GRID LINES AND SLAB LOADS. SEE ARCHITECTURAL DRAWINGS AND FRAMES.
2. SLAB ELEVATIONS VARY. SEE ARCHITECTURAL DRAWINGS.
3. CONCRETE STRENGTH IS NOTED IN SCHEDULE.
4. PROVIDE JOINTS/KEYS FROM COLUMN TO SLAB TO ALLOW TO MATCH VERTICALS EXCEPT AS NOTED IN SCHEDULE.
5. PROVIDE COMPRESSION LAP SPICES (LTS) FOR COLUMNS. COLUMN LENGTHS WILL BE THREE (3)X IN CASE COLUMNS ARE SPICED AT SPICES (LTS). PROVIDE TENSION LAP SPICES (TTS).
6. LAP SPICES FOR REINFORCING BARS GREATER THAN .35M ARE NOT PERMITTED. PROVIDE APPROVED MECHANICAL SPICES.
7. WHERE COLUMN FACES ARE OFFSET 75mm OR MORE, SPICES OF VERTICAL BARS ADJACENT TO THE OFFSET SHALL BE NOTED IN SCHEDULE.
8. WHERE ADDITIONAL REINFORCING STEEL IS REQUIRED IN THE FOLLOW, PROVIDE DETAILS AS PER NOTE 10 TO MATCH REINFORCING.
9. PROVIDE REINFORCING BARS AT TOP OF ALL COLUMNS AS LISTED ABOVE.

TYPICAL DETAIL FOR COLUMNS NOT LINED UP WITH COLUMNS BELOW

* INDICATES STAGGER SPLICE EVERY OTHER BAR AT FLOOR LEVEL AND MID HEIGHT.